



# GMT MONTHLY MEMBERSHIP PROGRESS REPORT

Results as of: 6/30/2020

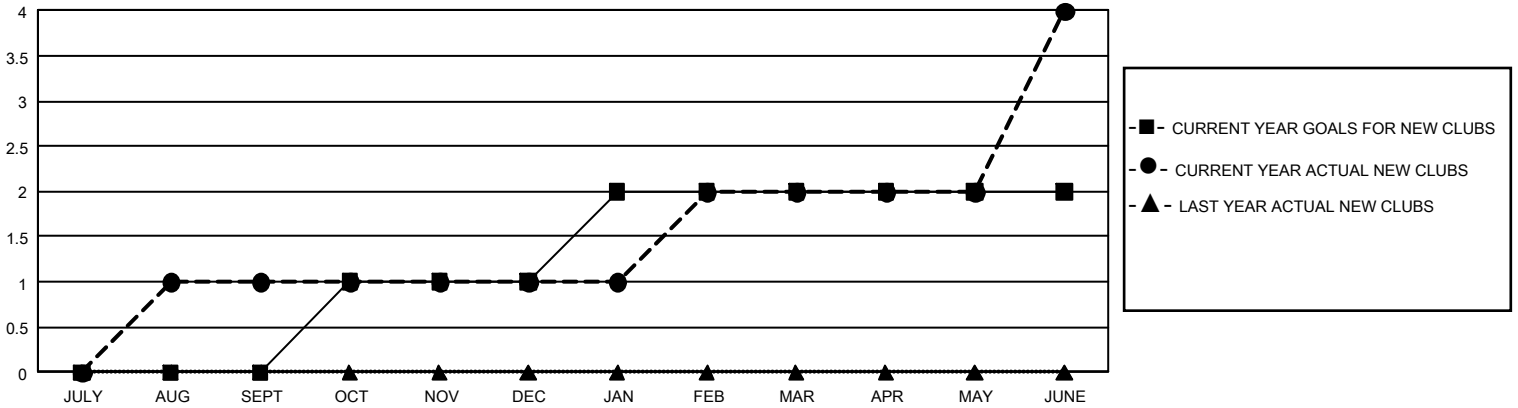
## GMT Constitutional Area 6, Group E

GMT: OPEN

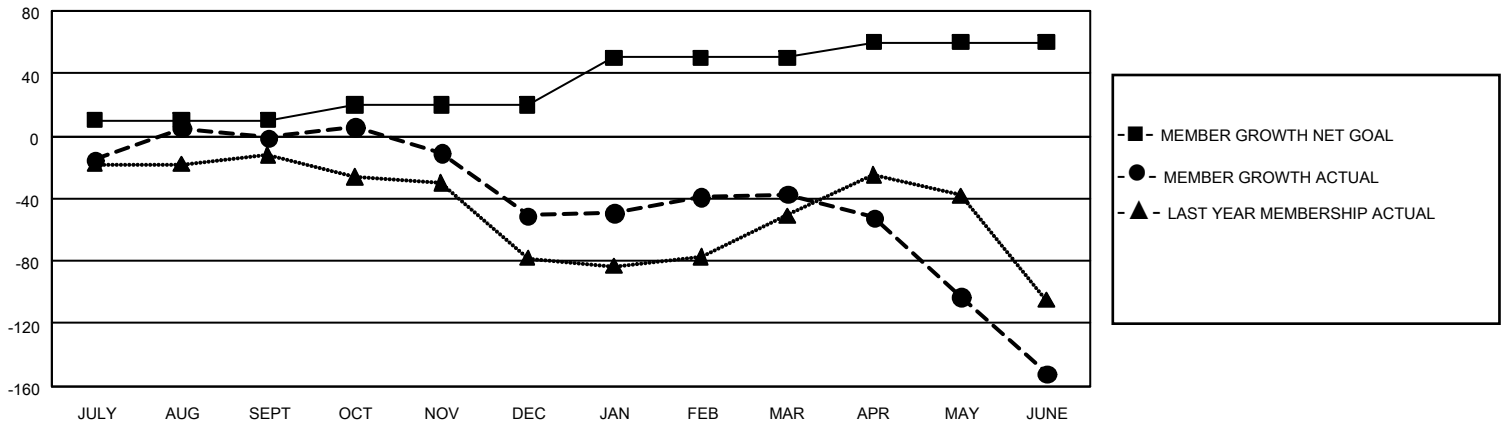
REPORT DOES NOT INCLUDE CLUBS IN UNDISTRICTED AREAS.

Clubs				Members			
RESULTS FOR 2019-2020				RESULTS FOR 2019-2020			
QUARTER	NEW CLUB GOAL	NEW CLUBS	DROPPED CLUBS	QUARTER	MEMBER GROWTH NET GOAL	MEMBER GROWTH ACTUAL	DROPPED MEMBERS ACTUAL (including transfers)
JULY/AUG/SEPT	0	1	1	JULY/AUG/SEPT	30	85	76
OCT/NOV/DEC	3	0	0	OCT/NOV/DEC	30	49	86
JAN/FEB/MAR	3	1	1	JAN/FEB/MAR	90	90	70
APR/MAY/JUNE	0	2	3	APR/MAY/JUNE	30	81	201

GOALS AND ACTUAL NEW CLUBS CUMULATIVE



GOALS AND ACTUAL MEMBERS CUMULATIVE



DROPPED CLUBS: 4	46 CLUBS OF 116 ADDED 1 OR MORE NEW MEMBERS	<u>GENDER DISTRIBUTION</u>	
<u>DROPPED MEMBERS</u>		MALE	1,217 (54.84%)
DECEASED	7	FEMALE	1,002 (45.16%)
CLUB CANCELLED	0	TOTAL FAMILY UNIT MEMBERS	622
OTHER	411	FAMILY MEMBERS PAYING HALF DUES	351
TOTAL	418		

[CLICK HERE FOR CUMULATIVE MEMBERSHIP DATA](#)